



# Te Kura Waenga o Ross

Poipoia te kākano kia puawai

Monday 28th February 2022

Kia ora koutou,

We hope you are all safe and well at this uncertain time. It is vital you all are using the School App to receive updates in a timely manner. The School App can be downloaded on your phone using the links below. Once installed search for Ross Intermediate School and then ensure notifications are turned on. We continue to encourage and urge whānau to get vaccinated, as this is providing protection for us all. We are also thrilled with how students are managing the wearing of masks. They are doing a great job during these trying times.



## SchoolAppsNZ

Parents are able to receive direct alerts and notices on compatible Android or iOS mobile devices through SchoolAppsNZ. Simply download the app and select Ross Intermediate from the available schools!



[Google Play](#)

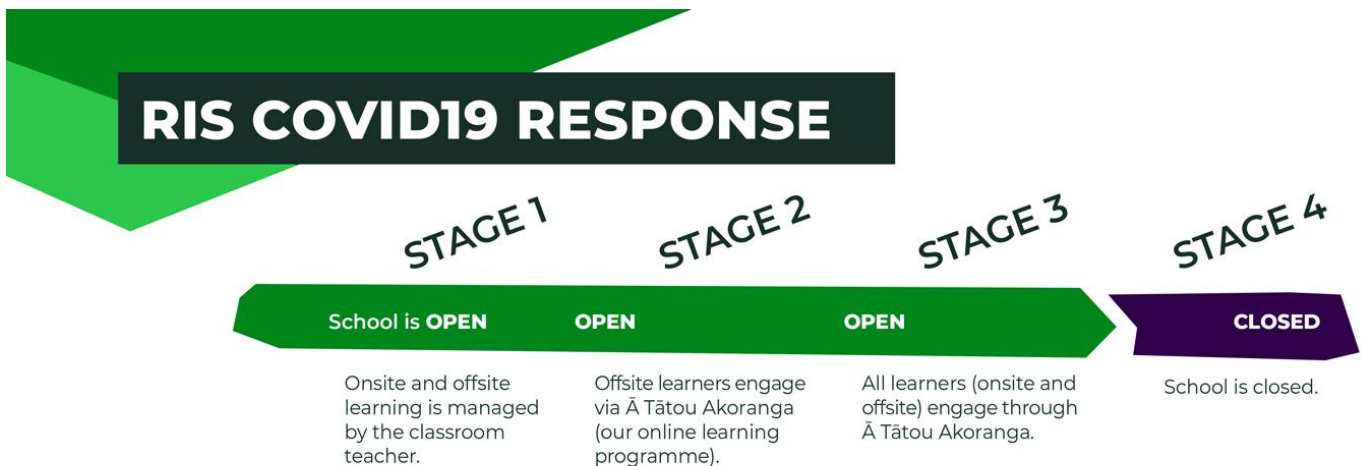


[Apple Apps](#)

COVID19

RESPONSE

INFOGRAPHIC (Attached with this email)



### RESPONSE TO A POSITIVE CASE



## What are the stages about?

We expect to see a rise in absences over the next few weeks, as learners and teachers are required to self-isolate at home. In preparation for this, we have developed a four stage plan to ensure students are provided with quality learning both onsite and offsite.

*Stage One:* Teachers provide learning for both onsite and offsite students.

*Stage Two:* Teachers at school provide learning for onsite students.

Offsite students engage in our Ā Tātou Akoranga programme.

*Stage Three:* Onsite and offsite learners all engage in our Ā Tātou Akoranga programme.

*Stage Four:* The school is closed.

## Where can my child find work to do at home?

Offsite learners are able to visit our [Student Hub](#) (via the website) to access a range of learning activities they can complete at home. Under Stage One, offsite learners will be provided with work from their classroom teacher. Under Stage Two, offsite learners will engage in the Ā Tātou Akoranga programme.

## What is Ā Tātou Akoranga

Ā Tātou Akoranga is a school-wide learning programme that will begin in Stage Two for offsite learners. All learning will be delivered by teachers who are also offsite. Ā Tātou Akoranga can be accessed from the [Student Hub](#) on the website. The timetable for each day is at the top, with links to join video meetings, lessons and activities.

## What if my child left their laptop or other things they need at school?

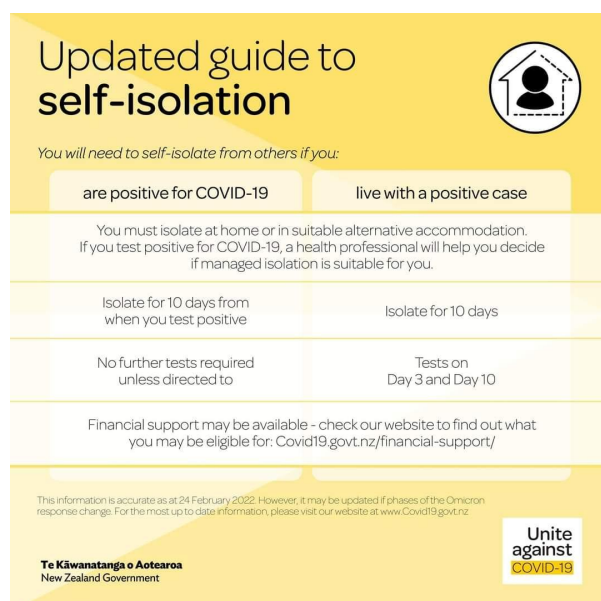
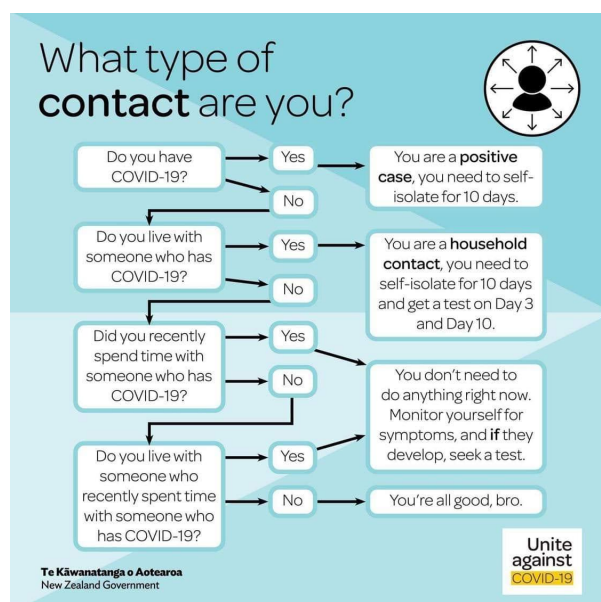
If your child left their laptop or something else they need at school, someone who is not self-isolating can come and collect this on your behalf. Please ring the office and let us know, so we can have it ready.

## We have a school provided laptop, can it come home?

If your child would like to engage in learning programmes while isolating, you can ring the school office to organise to have their school provided laptop come home. It is really important this device is looked after and no additional accounts are added.

## What do I do if my child is a household contact or tests positive for COVID?

Please ring the school office to notify them of your child's absence. The office staff will run through a series of questions with you; including their expected return date, if they need their school laptop or if they require a hard pack of resources etc...



## How will we know if there is a positive case in the school?

We have moved to Phase 3 of the Government's Covid Response. This sees the definition of a close contact change to only household contacts. It will no longer include classmates or fellow students. We will still look to advise whānau when a positive case is registered, but this may not be to the whole school. It is important our school community is monitoring for symptoms of COVID and if you feel unwell, stay home and get a test.

## What are the safety measures in place at school?

Our health and safety measures under the Red alert setting are outlined in [this document](#). PDF attached.

## Stay Calm

It is important that we all remain calm and look after each other during this time. We have the systems in place to support the safety of staff and students and to keep learning programmes running. Please do not share information that has not come directly from the school, about the school. We will always make sure you get what you need, when you need it. This is something our community have praised us on throughout this COVID pandemic.

## What if my whānau need support while isolating?

If you need support during self-isolation, call the COVID Welfare Phone Line on 0800 512 337. They will connect you with someone who can help. This could be a local community organisation, a government agency, a marae-based service or support that iwi have established.

For more information go to [Getting support while self isolating](#)

### Other recommended resources

- [My self isolation plan](#)
- [Preparing to self isolate](#)
- [How to self isolate](#)

### Symptoms of COVID-19

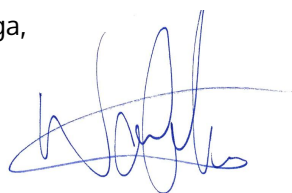
- A new or worsening cough
- Sneezing and runny nose
- A fever
- Temporary loss of smell or altered sense of taste
- Sore throat
- Shortness of breath

Less common symptoms include diarrhoea, headache, muscle aches, nausea, vomiting, malaise, chest pain, abdominal pain, joint pain, or confusion/irritability.

For more information, go to [Covid 19 Symptoms - Health & Wellbeing](#)

We will send out updates as they come to hand. Stay safe!

Ngā manaakitanga,



**Wayne Jenkins**



Principal • Tumuaki

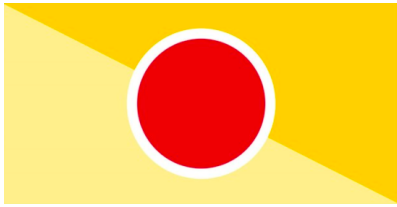
[principal@rossintermediate.school.nz](mailto:principal@rossintermediate.school.nz)

**ROSS INTERMEDIATE SCHOOL**



06 3585461 • 0212426500

[www.rossint.school.nz](http://www.rossint.school.nz)



# ROSS INTERMEDIATE COVID-19 RESPONSE PLAN OMICRON

**UPDATED:** February 25 2022

<p><b>Office and Visitors</b></p>	<p>Social distancing in the office is managed as practically as possible..</p> <p>All parents / essential visitors / contractors <b>MUST</b> enter the school via the office, no exceptions.</p>
<p><b>Classroom Protocols</b></p>	<p>Hand wash or sanitise before eating and when entering a new space.</p> <p>Students are to remain at their designated desk where possible for learning and for eating.</p> <p>Desks to be wiped down at the end of each day and before eating.</p> <p>No trips or EOTC for any classes or groups.</p>
<p><b>Lunch in Schools</b></p>	<p>Lunch will continue as normal. Higher hygiene regime for staff and students. Teachers distribute food in class.</p>
<p><b>Playground Protocols</b></p>	<p>Students should not be making contact with each other in a physical way ie. hugging, team tag etc..</p> <p>Drinking fountains are turned off.</p> <p>These will be continually reviewed to reflect our local situation.</p>
<p><b>Other School Protocols</b></p>	<p>No school or house assemblies. Other school programmes continue as usual.</p> <p>Hand wash or sanitise when entering a new space.</p> <p>Access to Ross is restricted to authorised persons only.</p> <p>Students that are not well are to remain home. If they fall unwell at school they need to be collected immediately.</p>
<p><b>Staff Protocols</b></p>	<p>Staff with concerns about attending work should talk to Wayne.</p> <p>Support students and ensure protocols are followed.</p> <p>If staff are considered close contacts to any infection they need to advise the school immediately.</p>
<p><b>Use of Masks</b></p>	<p>Everyone wears a mask when indoors unless they have an exemption.</p> <p><b>STAFF:</b> This needs to be a Medical Grade Mask. This is due to the fact that we are in a Vaccine mandated workplace. The school will be providing these for staff. The school provided mask must be worn unless you have an approved alternate..</p> <p><b>STUDENTS:</b> All students are required to provide their own face covering. A limited number of masks will be available in each classroom. There is no required uniform mask.</p> <p><a href="#">Resource: Mask wearing for kids</a></p> <p>Students do not need to wear a face covering during PE Sessions.</p> <p>Where a student refuses to wear a mask, without an exemption, we will contact home and require the student to be collected.</p> <p><b>MASK EXEMPTIONS:</b></p> <p>Any parent wishing to have their child exempt is required to meet with the Principal (or delegate). A pass will be issued for the student to be able to wear or show if asked.</p>
<p><b>Outside Groups</b></p>	<p>The school is closed to all outside groups and bookings.</p>
<p><b>Vaccinations</b></p>	<p>Anyone from the age of 5 plus can now be vaccinated against Covid-19. At this stage we do not require information regarding students' vaccination status.</p> <p>We support the advice and messaging from the Ministry of Health in this area.</p>

<p><b>Vaccinations Continued</b></p>	<p>There are a number of websites available with resources that will help explain what the vaccine is, how it works and whether the vaccine is safe for young people.</p> <ul style="list-style-type: none"> <li>• <a href="#">Kids Health</a></li> <li>• <a href="#">Health Navigator</a></li> <li>• <a href="#">The Immunisation Advisory Centre</a></li> </ul> <p>Staff and adults supporting our school learning programmes need to have had a booster within 6 months of their 2nd dose. If you are already 6 months then you have until March 1 to achieve this.</p>
<p><b>Managing Learning and Absences (Off Site Protocols)</b></p>	<p>We are a team, flexible, supportive, all decisions being made are in the best interests of student and staff learning and safety.</p> <p><b>The following will be deferred to T2:</b>  Friday Programmes  Staff PD Programme  Specialist Inquiry Learning Support / Extension</p> <p><b>Potential to Defer</b>  Staff release  Super Sports and School Sporting Commitments (depending on codes)</p> <p><b>STAFF ABSENCES</b>  We know that, under Red, there is a strong possibility of higher absence rates. Our number one priority is maintaining the integrity of our Core Learning and Specialist Inquiry Programmes. This may require staff to help support student learning outside their usual responsibilities.</p> <p><b>WHEN DO YOU STAY HOME</b>  Follow the latest Ministry of Health guidance and advice.</p> <p><b>SUPPORT WHEN CONNECTED TO AN ACTIVE CASE</b>  <a href="https://www.education.govt.nz/covid-19/advice-for-schoolskura/schools-connected-to-a-confirmed-case/">https://www.education.govt.nz/covid-19/advice-for-schoolskura/schools-connected-to-a-confirmed-case/</a>   <a href="https://assets.education.govt.nz/public/Documents/COVID19-files/Schools/Managing-COVID-19-A-public-health-toolkit-for-primary-and-intermediate-schools-and-kura_7-December-2021.pdf">https://assets.education.govt.nz/public/Documents/COVID19-files/Schools/Managing-COVID-19-A-public-health-toolkit-for-primary-and-intermediate-schools-and-kura_7-December-2021.pdf</a></p> <p><b>RESOURCES FOR STAFF (MOE Links)</b>  We are awaiting this support material</p>
<p><b>EOTC (including Camps)</b></p>	<p>We cannot require evidence of a child's vaccination status. Nor can a child be excluded from education outside the classroom (EOTC) based on vaccination status.</p>
<p><b>Ventilation</b></p>	<p>Windows and doors should remain open to create ventilation while in the class.</p> <p>Doors to be closed/locked when you are not in the class.</p> <p>Due to the summer weather, during Morning Break and Lunchtimes classroom Heat Pumps should be run with windows closed to create a cool environment when returning to the classroom. If your room remains hot due to these requirements then you may also operate your Heat Pump for additional cooling.</p> <p>We are treating the Gymnasium as an outdoor environment if the doors are all open. Extraction Fans should also be operational.</p>
<p><b>EAP Services and Support</b></p>	<p>All teachers, regular relievers and support staff across kura and state and state-integrated schools are eligible to access these services.</p> <ul style="list-style-type: none"> <li>• You'll find further information about these EAP services on <a href="#">our website</a>.</li> <li>• Or if you have any questions call 0800 327 669/1800 726474 or visit the <a href="#">EAP website</a>.</li> </ul>
<p><b>Student Absences</b></p>	<p>Where a parent chooses to have their child absent, offsite learning resources are provided to engage with. Visit <a href="#">our website</a> and the student hub for more information.</p> <p>Where a child is required to be absent - students demonstrating Covid-like symptoms are required to remain at home. Please refer to latest Ministry of Health guidance and advice as well as most recent communications from the school.</p>

**IMPORTANT:** These guidelines are subject to change based on government advice at the time.

# RIS COVID19 RESPONSE



## RESPONSE TO A POSITIVE CASE



**Te Kura Waenga o Ross**

CONNECT • NURTURE • GROW | Poipoiā te kākano kia puawai